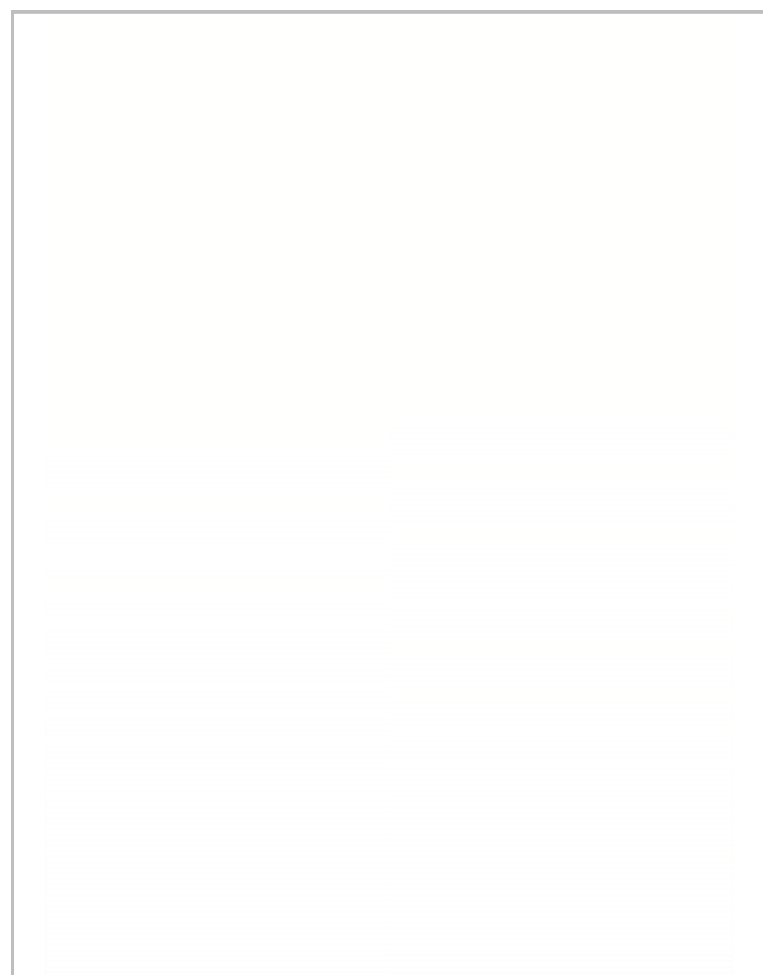


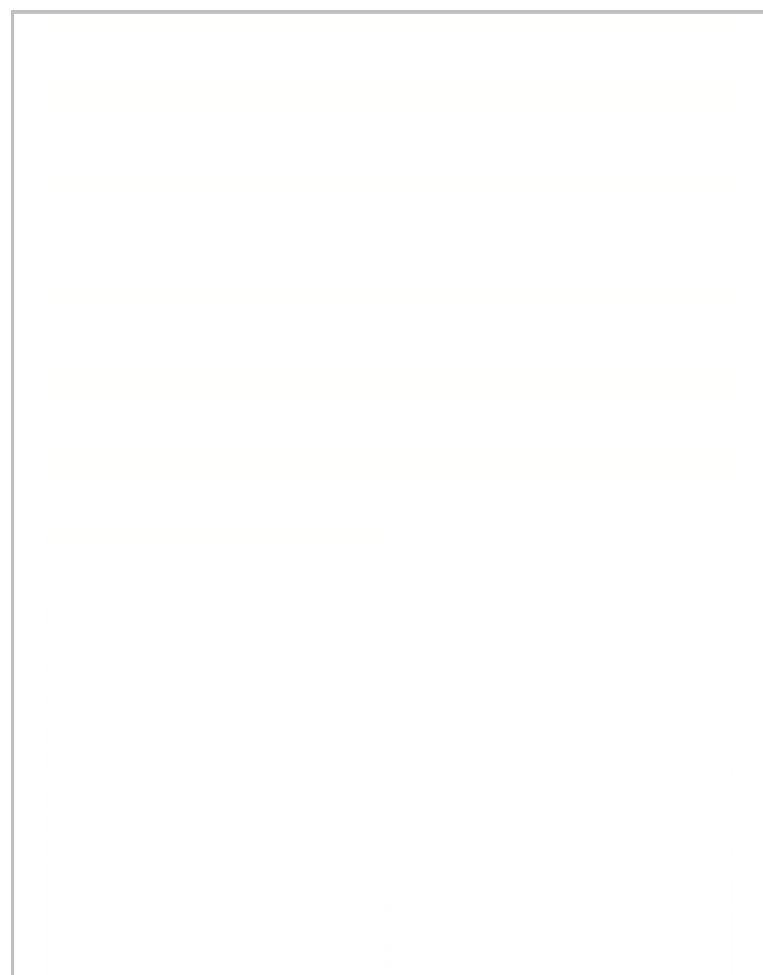
### MA0753.1: K27ac coverage

4045 instances bound in WEN & unbound in WNN



### MA0753.1: K27ac coverage

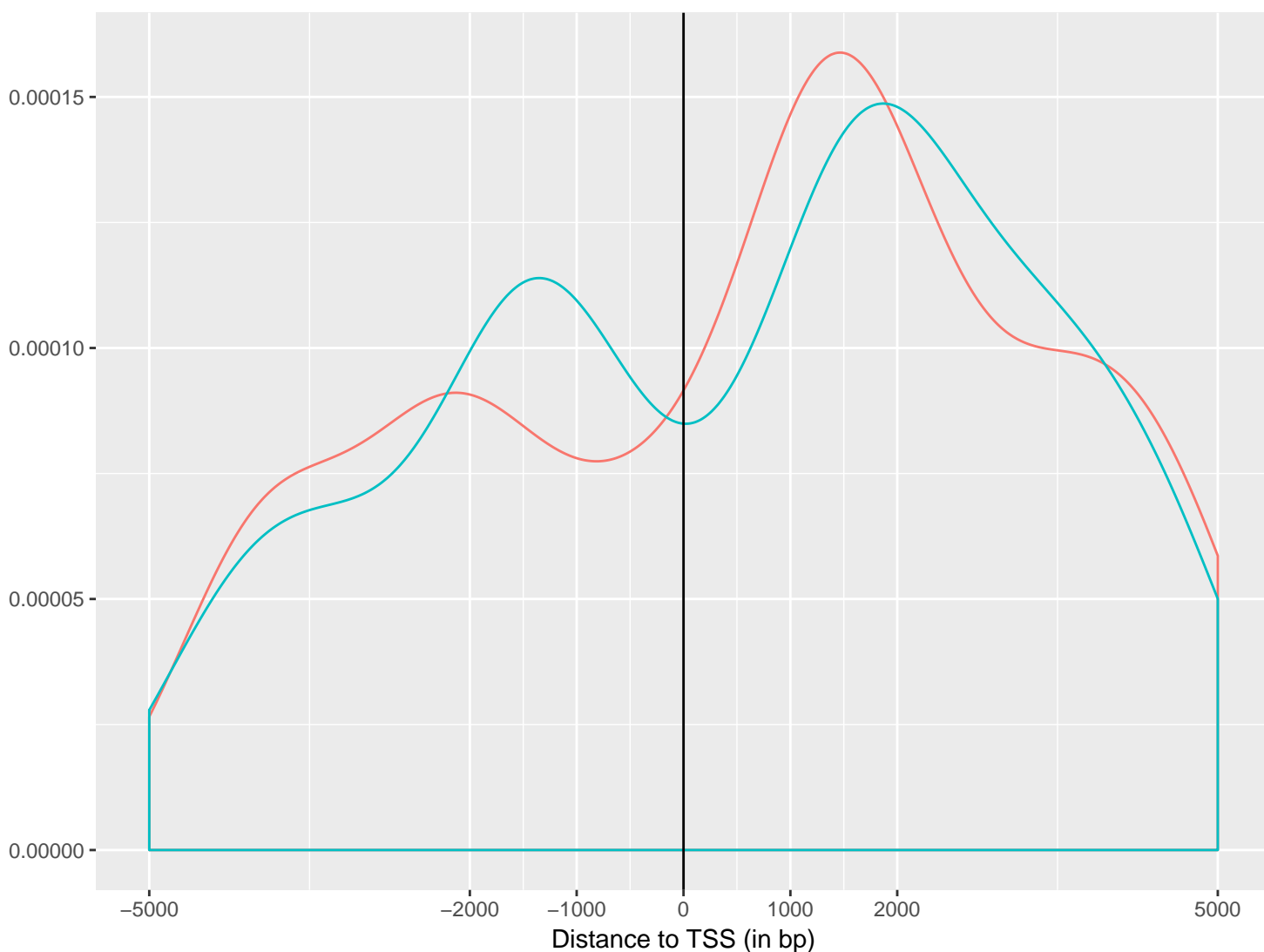
4303 instances bound in WNN & unbound in WEN



K27ac coverage (in  $\log_2(\text{counts}+1)$  per instance)

K27ac coverage (in  $\log_2(\text{counts}+1)$  per instance)

### MA0753.1: distance to TSS of bound instances

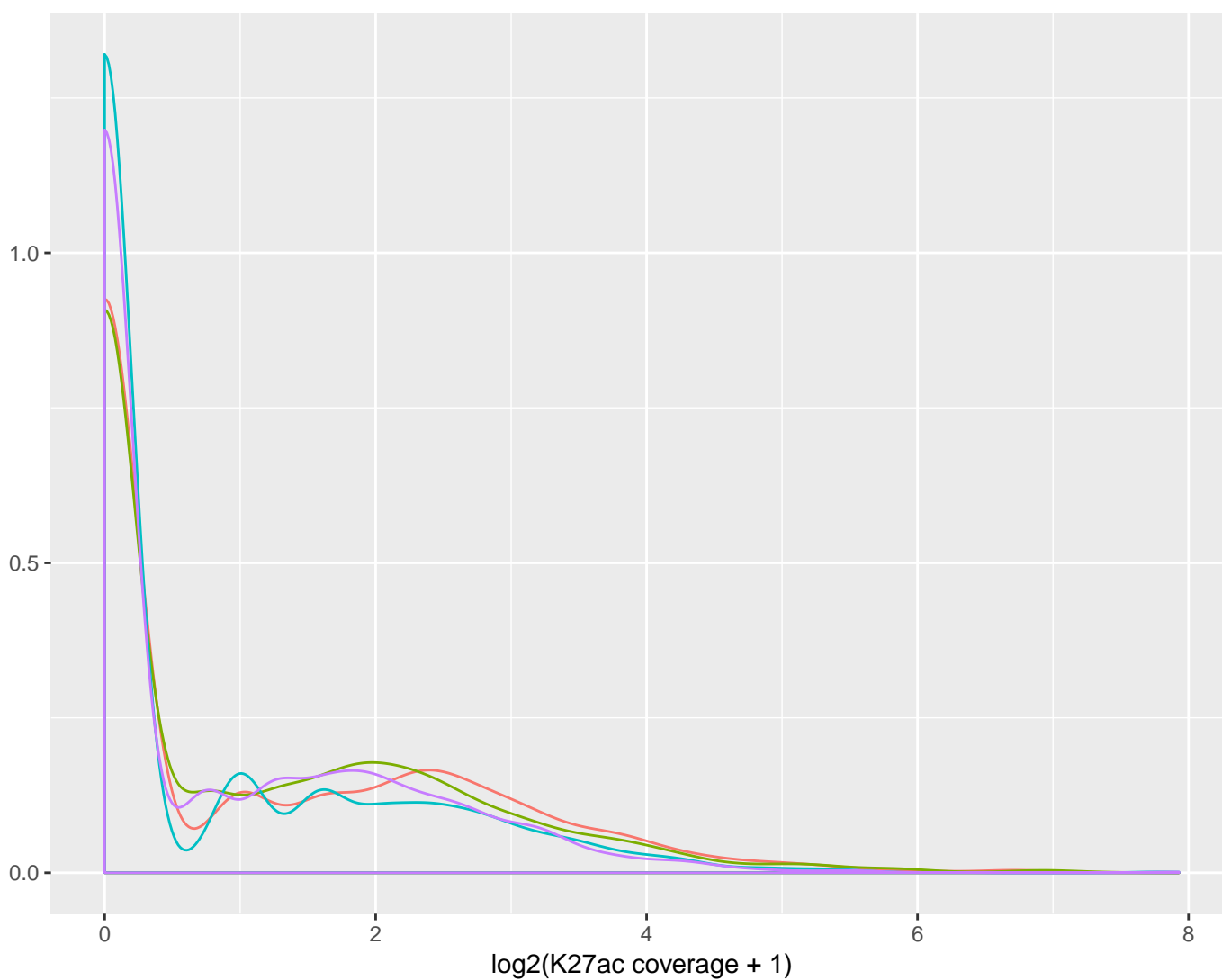


bound\_instances

- WENbound\_WNNunbound
- WNNbound\_WENunbound

Distance to TSS (in bp)

### MA0753.1: K27ac coverage density



condition

- WENbound\_WNNunbound\_inWEN
- WENbound\_WNNunbound\_inWNN
- WNNbound\_WENunbound\_inWEN
- WNNbound\_WENunbound\_inWNN

$\log_2(\text{K27ac coverage} + 1)$