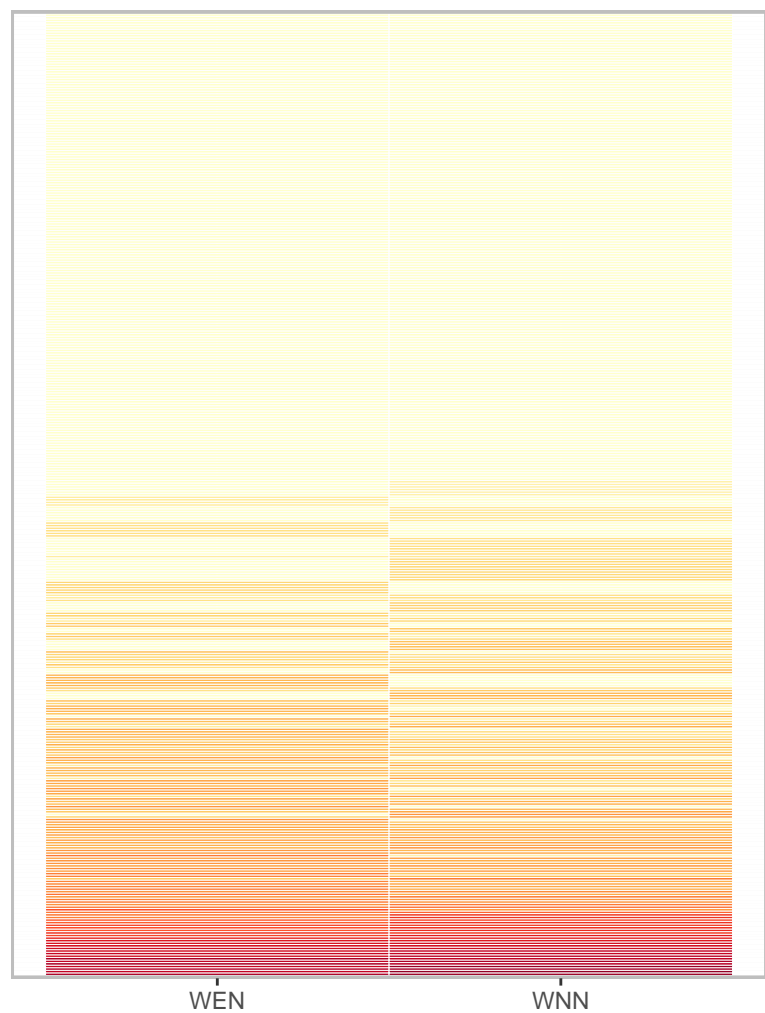


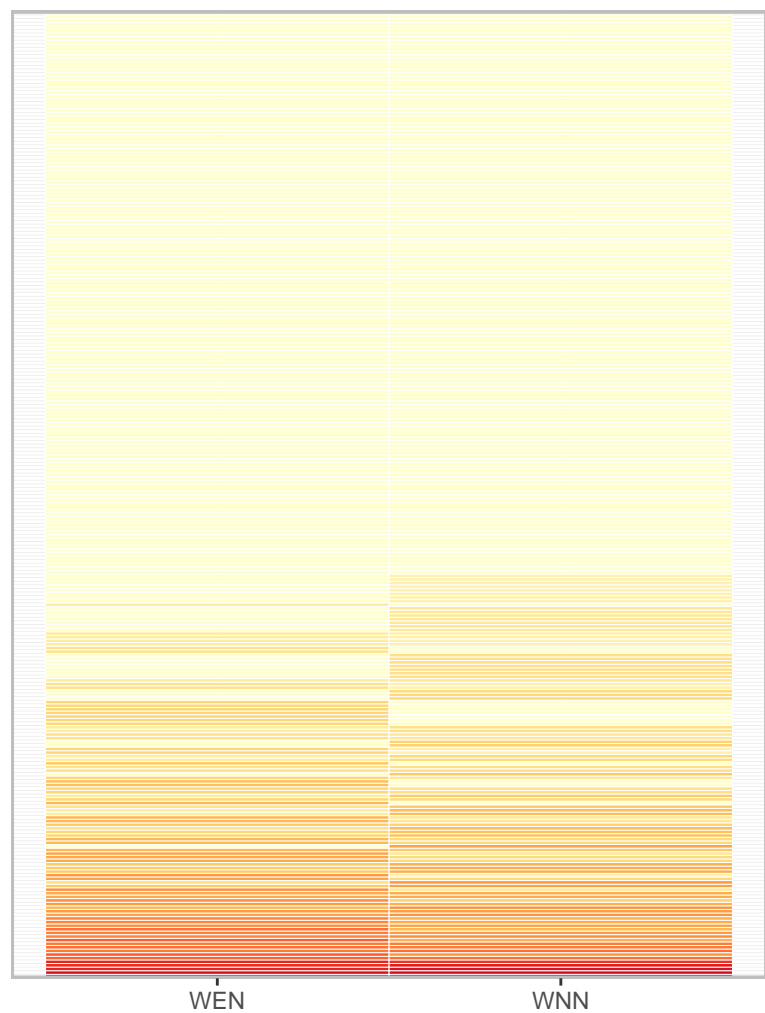
MA0641.1: K27ac coverage

375 instances bound in WEN & unbound in WNN



MA0641.1: K27ac coverage

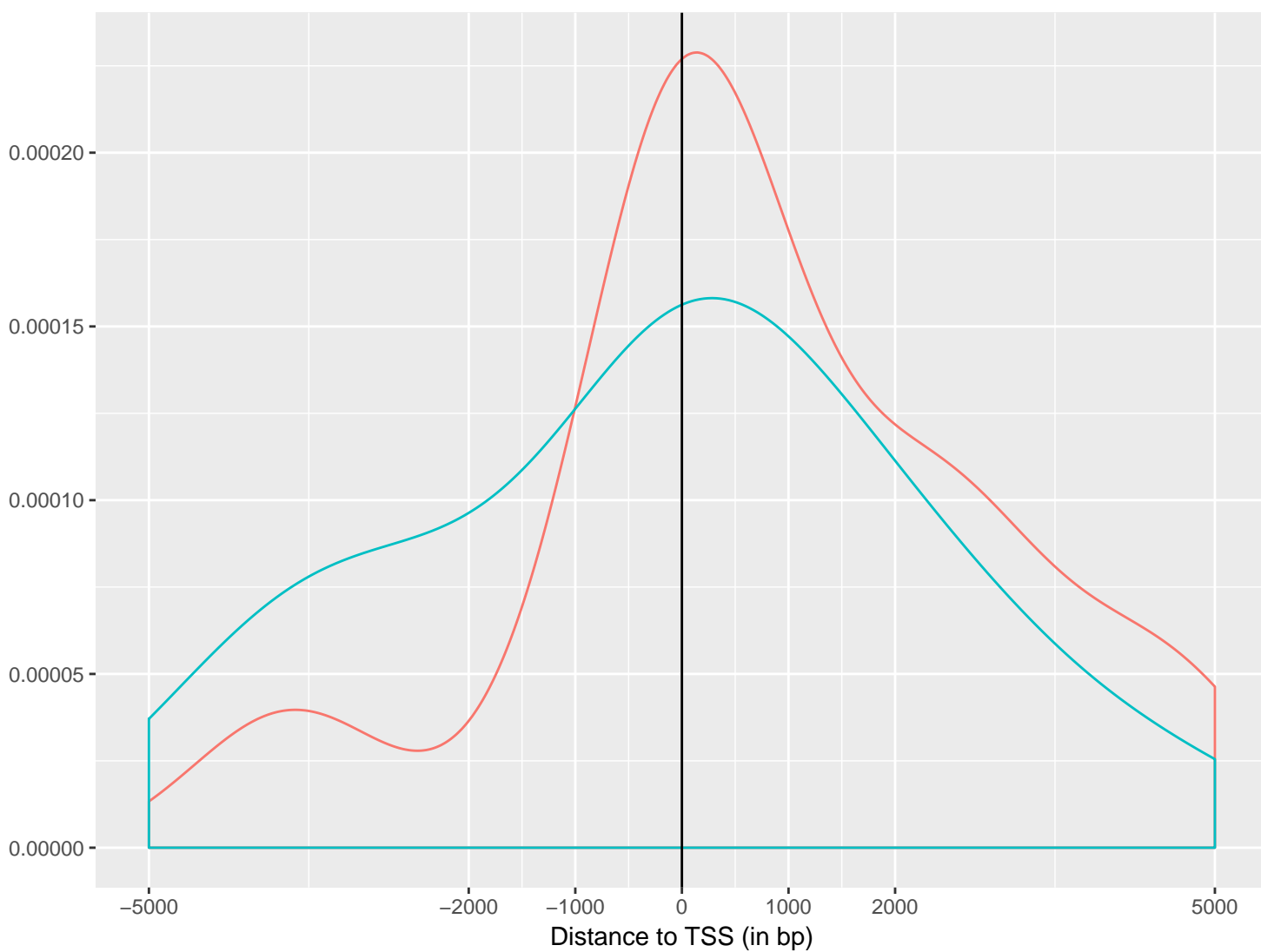
268 instances bound in WNN & unbound in WEN



K27ac coverage (in $\log_2(\text{counts}+1)$ per instance)

K27ac coverage (in $\log_2(\text{counts}+1)$ per instance)

MA0641.1: distance to TSS of bound instances

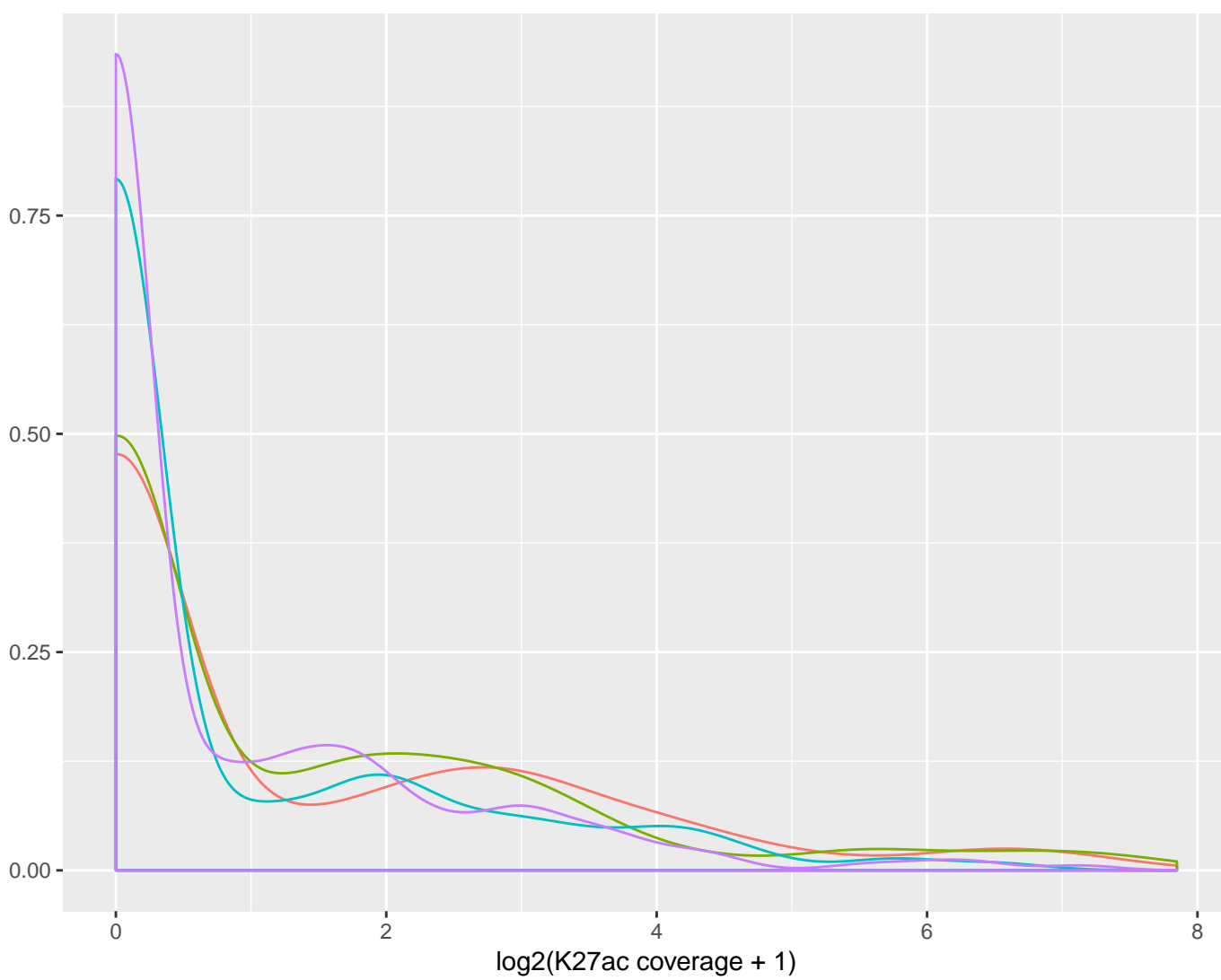


bound_instances

- ▭ WENbound_WNNunbound
- ▭ WNNbound_WENunbound

Distance to TSS (in bp)

MA0641.1: K27ac coverage density



condition

- ▭ WENbound_WNNunbound_inWEN
- ▭ WENbound_WNNunbound_inWNN
- ▭ WNNbound_WENunbound_inWEN
- ▭ WNNbound_WENunbound_inWNN

$\log_2(\text{K27ac coverage} + 1)$