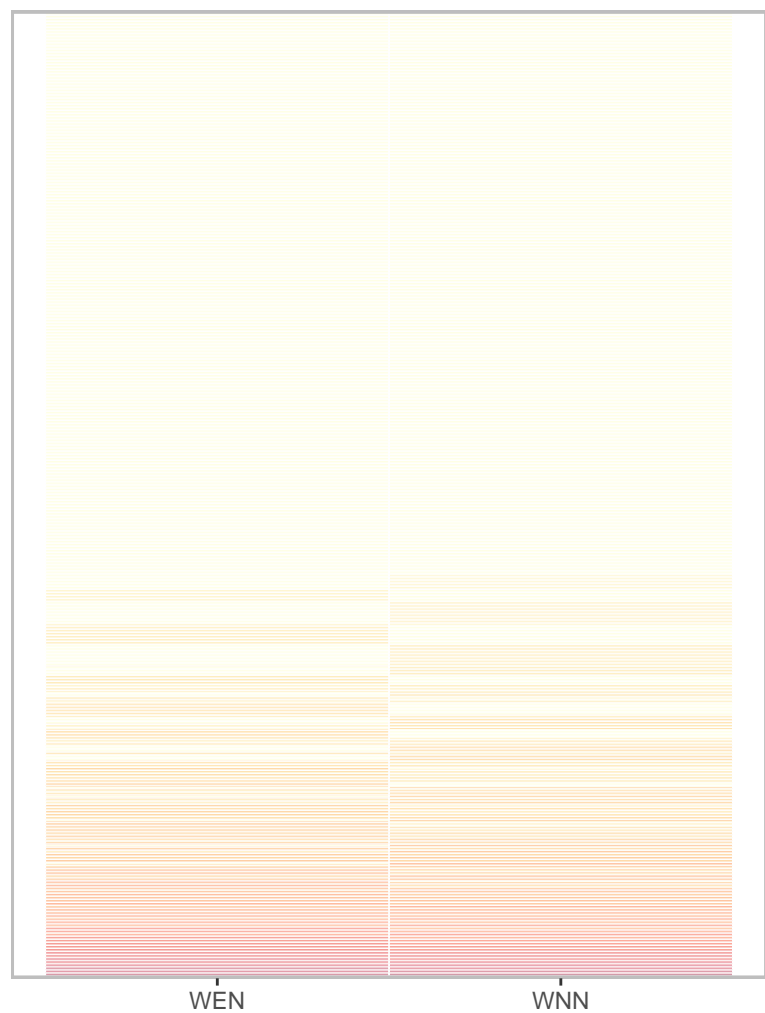


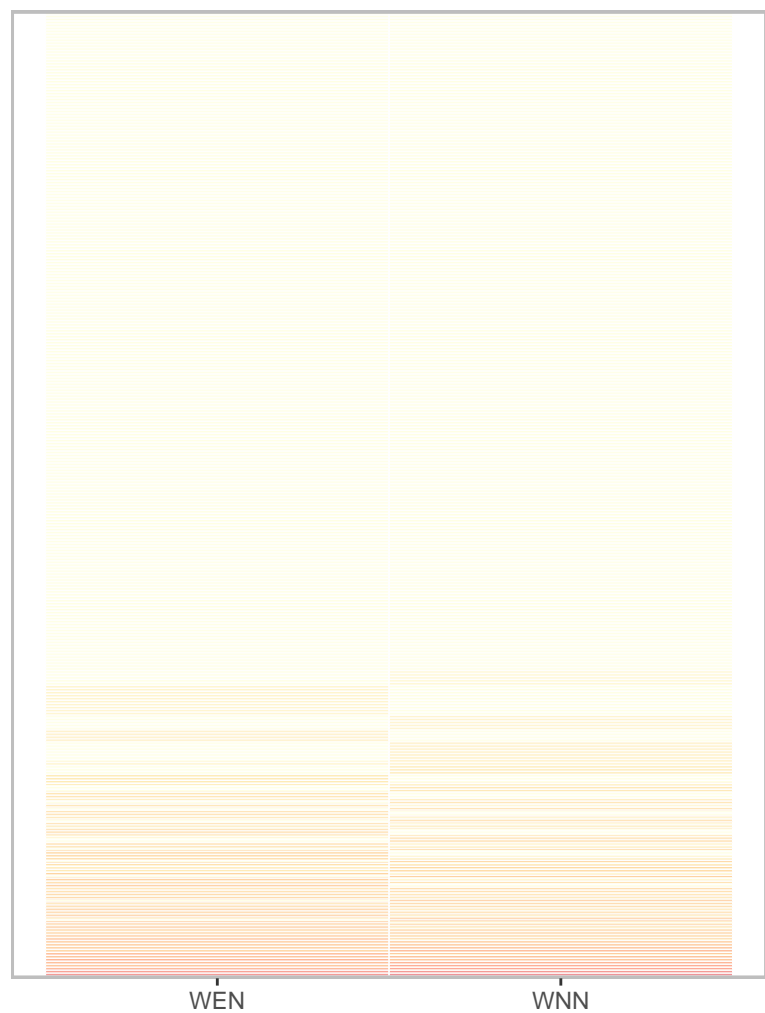
MA0600.2: K27ac coverage

652 instances bound in WEN & unbound in WNN



MA0600.2: K27ac coverage

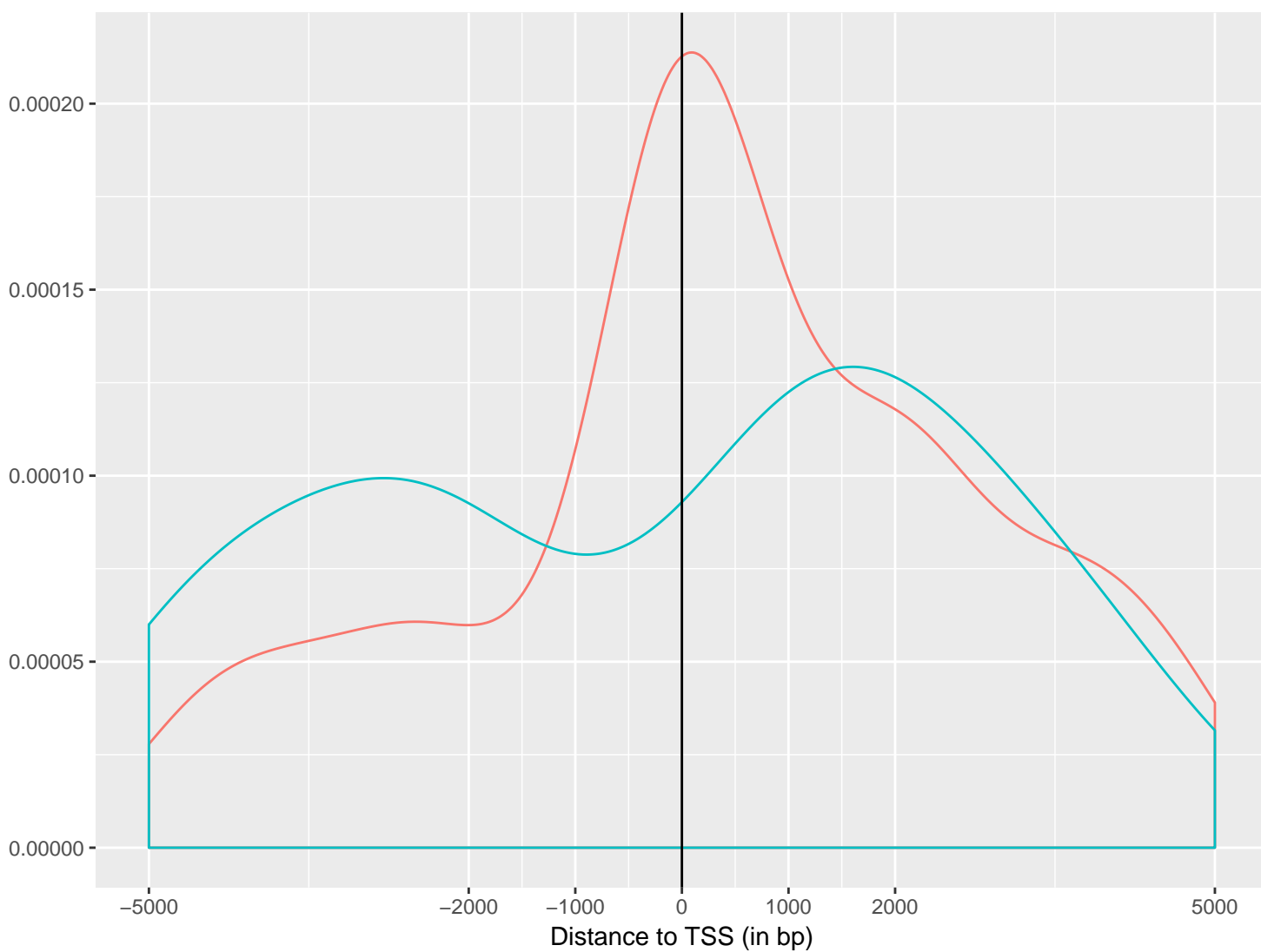
641 instances bound in WNN & unbound in WEN



K27ac coverage (in  $\log_2(\text{counts}+1)$  per instance)

K27ac coverage (in  $\log_2(\text{counts}+1)$  per instance)

MA0600.2: distance to TSS of bound instances

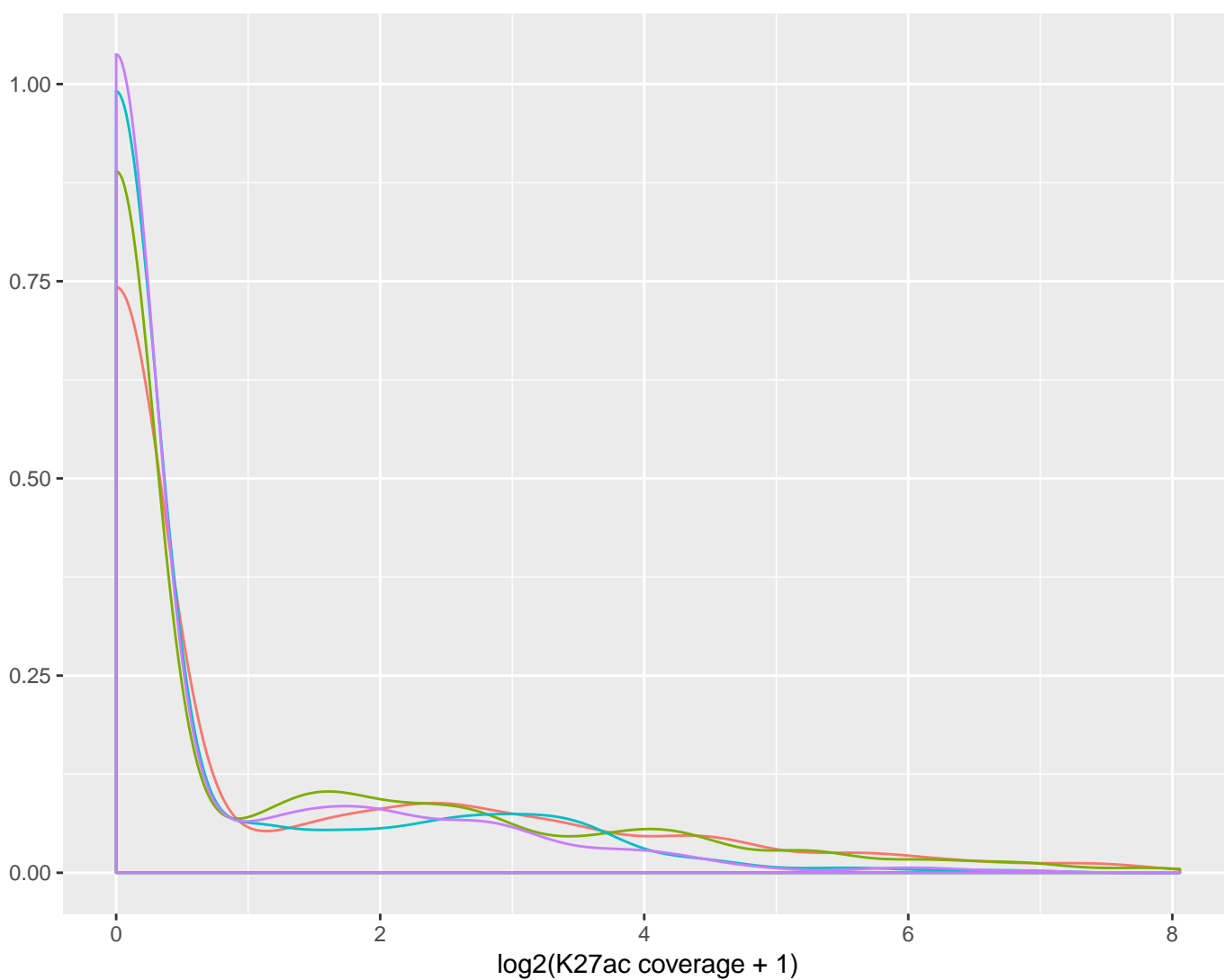


Distance to TSS (in bp)

bound\_instances

- WENbound\_WNNunbound
- WNNbound\_WENunbound

MA0600.2: K27ac coverage density



$\log_2(\text{K27ac coverage} + 1)$

condition

- WENbound\_WNNunbound\_inWEN
- WENbound\_WNNunbound\_inWNN
- WNNbound\_WENunbound\_inWEN
- WNNbound\_WENunbound\_inWNN