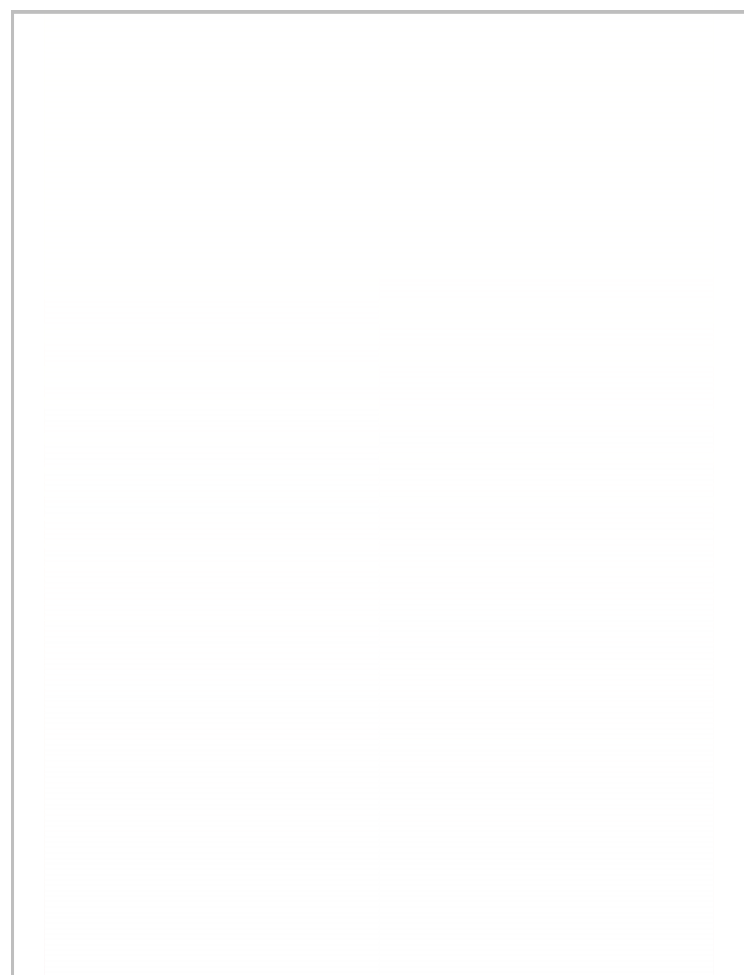


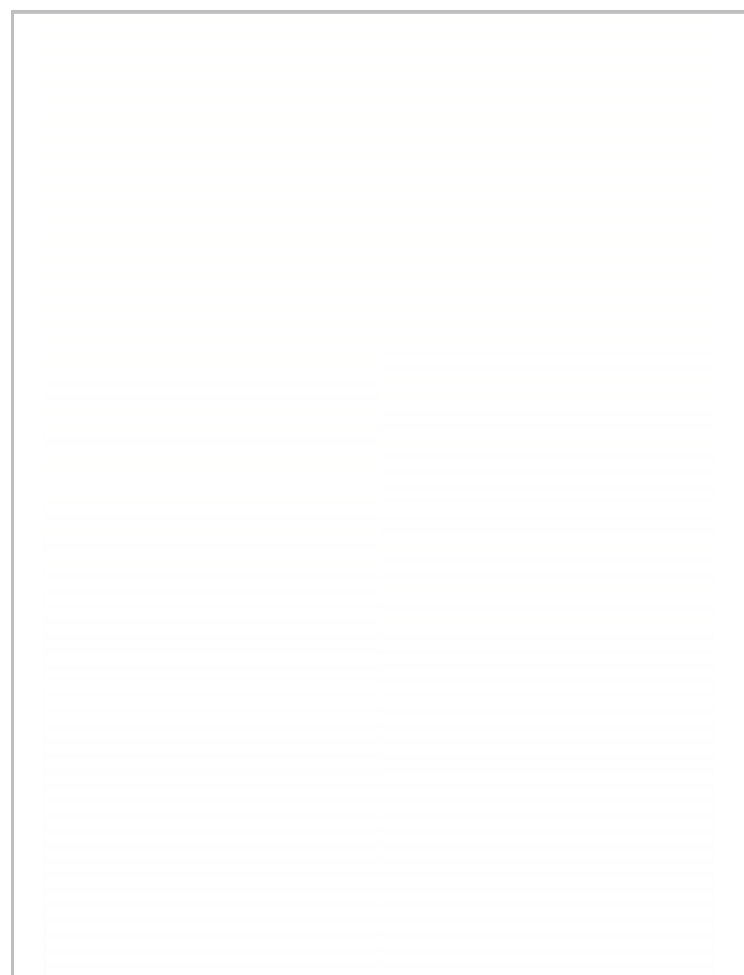
### MA0599.1: K27ac coverage

6950 instances bound in WEN & unbound in WNN



### MA0599.1: K27ac coverage

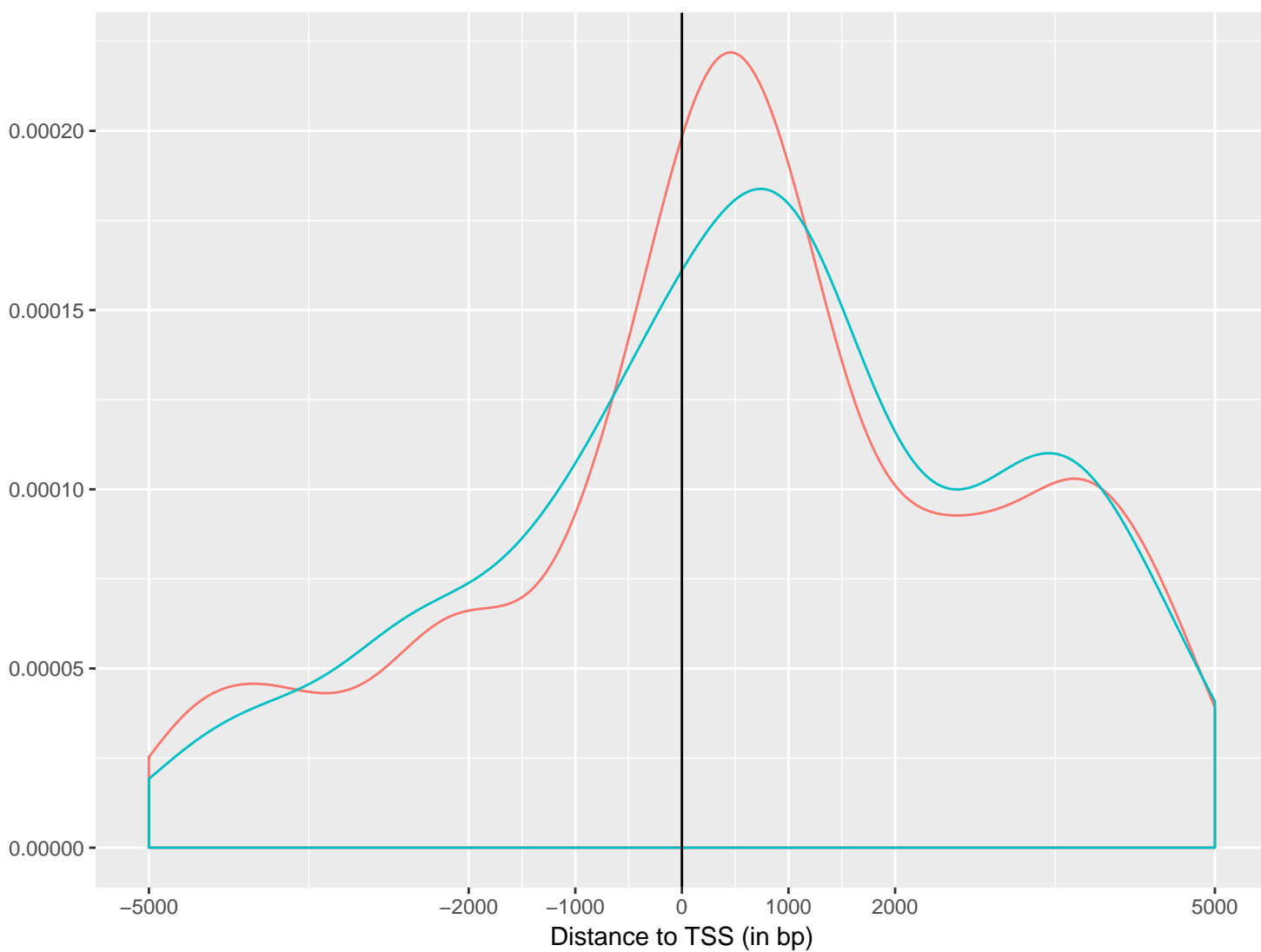
4901 instances bound in WNN & unbound in WEN



K27ac coverage (in  $\log_2(\text{counts}+1)$  per instance)

K27ac coverage (in  $\log_2(\text{counts}+1)$  per instance)

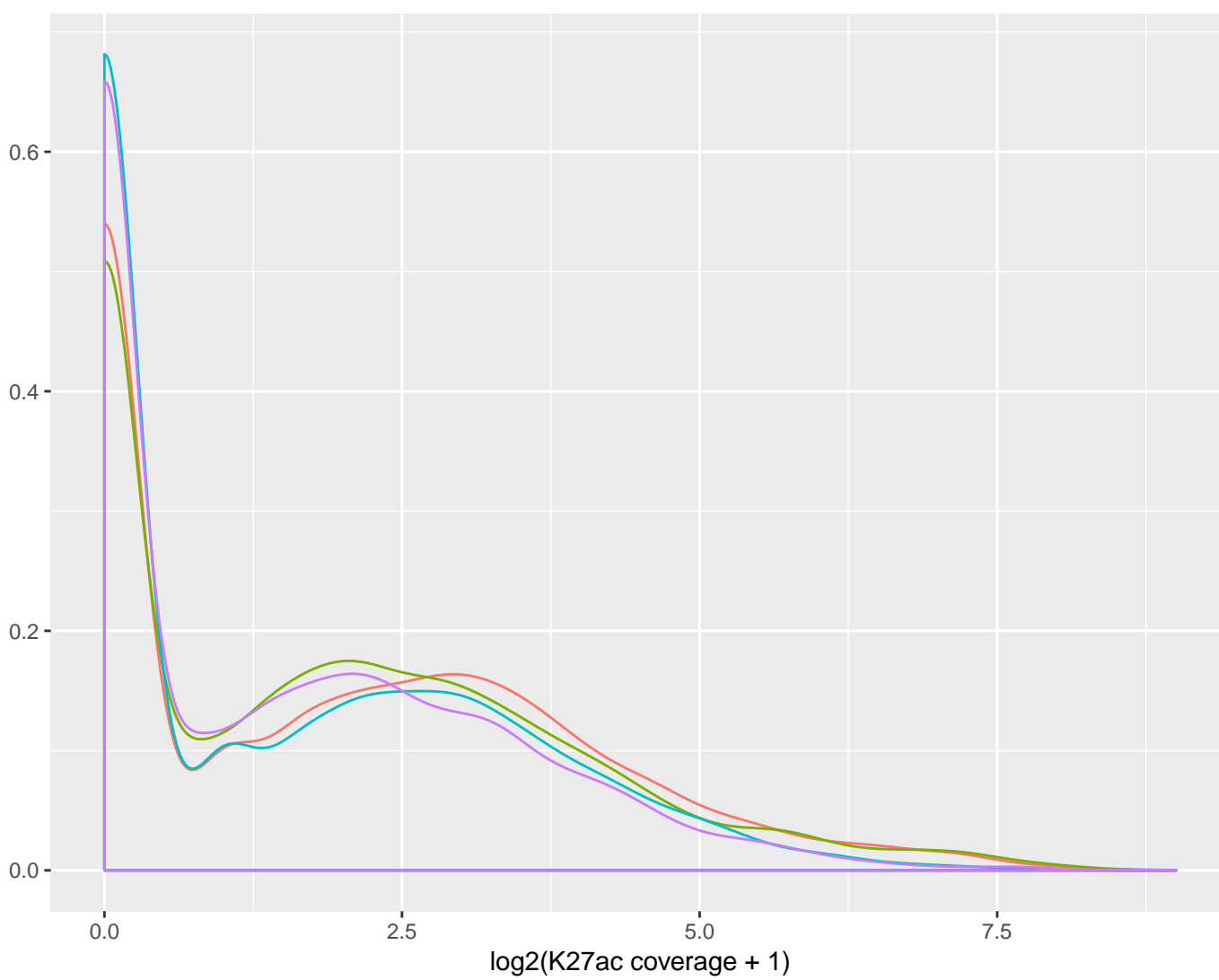
### MA0599.1: distance to TSS of bound instances



bound\_instances

- WENbound\_WNNunbound
- WNNbound\_WENunbound

### MA0599.1: K27ac coverage density



condition

- WENbound\_WNNunbound\_inWEN
- WENbound\_WNNunbound\_inWNN
- WNNbound\_WENunbound\_inWEN
- WNNbound\_WENunbound\_inWNN